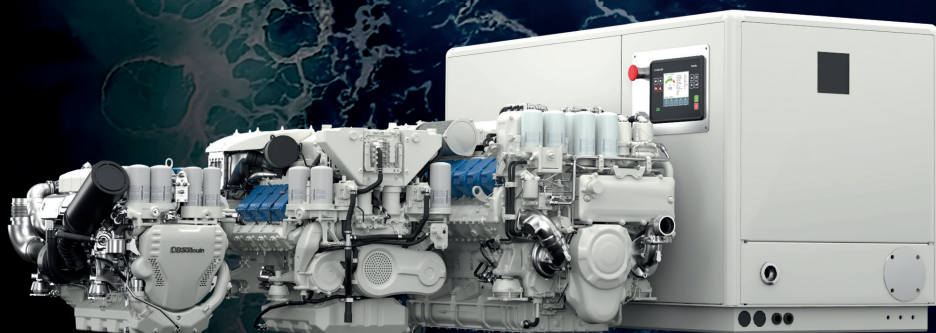


# BUILT TO **CRUISE**

POWERING WORLD  
CLASS LUXURY YACHTS  
WITH BAUDOUIN POWER  
SOLUTIONS





BUILT TO  
**LAST**

## A CENTURY OF MARINE EXCELLENCE

For over a century, Société Internationale des Moteurs Baudouin has been at the forefront of marine propulsion technology, delivering powerful, durable, robustness and reliability to the marine world. Our engines are born from a rich maritime heritage, meticulously engineered to withstand the most challenging marine environments.

Headquartered in Cassis, France, Baudouin benefits from its strategic location, which enhances our understanding of marine industry requirements and fosters innovation. This proximity to the Mediterranean allows us to stay closely connected with maritime trends and customer needs, further enriching our expertise.

Baudouin's commitment to excellence is evident in every aspect of our comprehensive range of propulsion solutions, generator sets, and auxiliary engines. Each product is a testament to our unwavering dedication to quality, adaptability, and dependability—hallmarks that have defined Baudouin since 1918.



In the ever-evolving landscape of yachting, Baudouin stands as a beacon of innovation, seamlessly blending cutting-edge technology with time-honoured craftsmanship. Our engines not only meet but exceed the most stringent environmental standards, including IMO Tier III and EPA Tier 4, through advanced hybrid and SCR solutions.

With a global network spanning over 100 countries, Baudouin ensures that yacht owners and operators receive unparalleled support, wherever their adventures may take them. Experience the power of a century's expertise with Baudouin—where reliability meets the horizon. Global presence with a network of distributors and service centres in over 100 countries.



Baudouin Headquarters - Cassis, France.



BUILT TO  
**CRUISE**

## BAUDOUIN'S ENGINES POWERING WORLD-CLASS LUXURY YACHTS OF FERRETTI

Baudouin is proud to power select models of Ferretti's world-renowned luxury yachts. A significant milestone as Baudouin enters the prestigious Ferretti lineup for the first time.

The Ferretti Yachts 580, a symbol of modern luxury, will feature Baudouin's powerful and reliable 6F21 engines. This collaboration showcases Baudouin's growing presence in the high-end yacht market and highlights our commitment to excellence, rooted in over a century of marine heritage that is distinguished by our genuine marine design, high reliability, and easy maintenance.

This new collaboration marks Baudouin's commitment to expanding its footprint in the luxury yacht sector and represents a fresh chapter for both companies, blending Ferretti's iconic design with Baudouin's robust marine technology. It is the perfect fusion of power, elegance, and reliability, as Baudouin and Ferretti continue to build on the legacy of innovation and excellence in the yachting industry.



FERRETTI YACHTS **580**

  
FERRETTI YACHTS



# BAUDOUIN 6F21 ENGINES

## POWERING THE FERRETTI 580

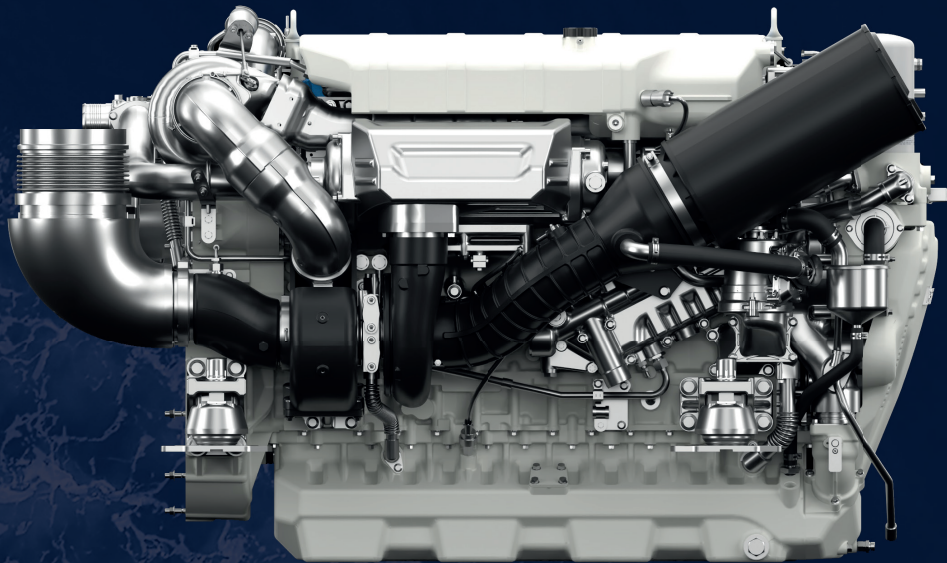
The integration of Baudouin's 6F21 engines in the FERRETTI 580 represents a perfect blend of power, efficiency, and luxury, setting new standards in the yachting industry and, our commitment to delivering high-performance, reliable, and efficient marine propulsion solutions.

### KEY FEATURES OF THE 6F21 ENGINE:

- **Powerful Performance:** The 6F21 delivers up to 735kW, 1,000 HP from its 12.5-litre displacement, ensuring robust and reliable propulsion for the Ferretti 580.
- **Compact Design:** With dimensions of 1882x1089x1080 mm, the 6F21 is one of the most compact engines in its class, optimizing engine room space without compromising on power.
- **Advanced Technology:** Equipped with a common rail & high-end injection technology system the 6F21 ensures exceptional efficiency and performance.
- **Environmental Compliance:** The 6F21 meets IMO II standards, with future compliance for IMO III supporting sustainable marine operations.
- **Ease of Maintenance:** Designed with user-friendly maintenance features, including individual cylinder heads and front-mounted fuel filters, the 6F21 minimizes downtime and maximizes uptime.

### BENEFITS FOR FERRETTI 580:

- **Enhanced Performance:** The 6F21's power density ensures exceptional speed and manoeuvrability for Ferretti yacht owners.
- **Improved Efficiency:** Advanced technology translates to optimal fuel consumption.
- **Reliability:** Baudouin's marine heritage guarantees dependable operation in challenging conditions.
- **Space Optimization:** Compact design allows for more flexible layout options in the engine room.



### PERFORMANCE MODELS:

Engine Model	Rating	kW	HP	RPM	g/kWh	l/h	IMO
6F21	P4	662	900	2300	223	174	II
	P5	735	1000	2300	228	197	II



FERRETTI YACHTS 580





# BAUDOUIN 8F21 MARINE ENGINE: POWER REDEFINED FOR LUXURY YACHTS

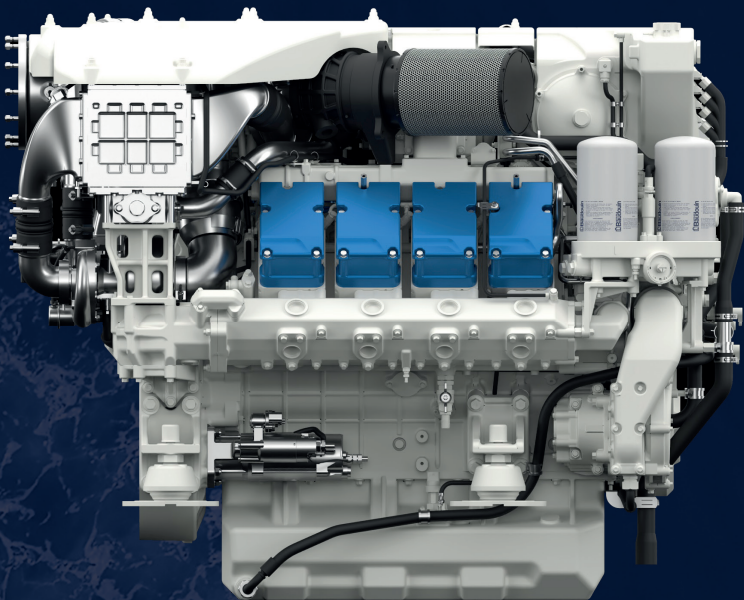
Introducing the Baudouin 8F21, a marine propulsion engine specifically engineered for the demanding world of luxury yachting.

## KEY SPECIFICATIONS:

- **Cylinders:** 8 V-Type
- **Bore x Stroke:** 127 x 165 mm
- **Total Displacement:** 16.7 L
- **Rated Power:** 1000 kW (1360 HP) at 2300 RPM
- **Fuel Consumption:** 204 g/kWh (optimum), 223 g/kWh (rated power)
- **Emissions Compliance:** IMO II

## YACHTING ADVANTAGES:

- **Compact Powerhouse:** With its high-power density, the 8F21 delivers impressive output while optimizing valuable space in yacht engine rooms.
- **Fuel Efficiency:** At 204 g/kWh optimum consumption, it offers extended cruising range and reduced operational costs.
- **Smooth Operation:** The 8-cylinder configuration ensures balanced performance and minimal vibration, enhancing onboard comfort.
- **Reliable Performance:** Built on Baudouin’s marine heritage, the 8F21 is designed for consistent operation in challenging marine environments.
- **Easy Maintenance:** Features like individual cylinder heads and accessible components reduce downtime during routine servicing.
- **Environmental Compliance:** Meets IMO II standards, ensuring access to regulated waters and eco-conscious operation.



## PERFORMANCE MODELS:

Engine Model	Rating	kW	HP	RPM	g/kWh	l/h	IMO
8F21	P4	919	1250	2300	207	250	II
	P5	1000	1360	2300	204	274	II



# INTRODUCING THE BAUDOUIN 16F23: POWERING YOUR YACHT TO NEW HORIZONS

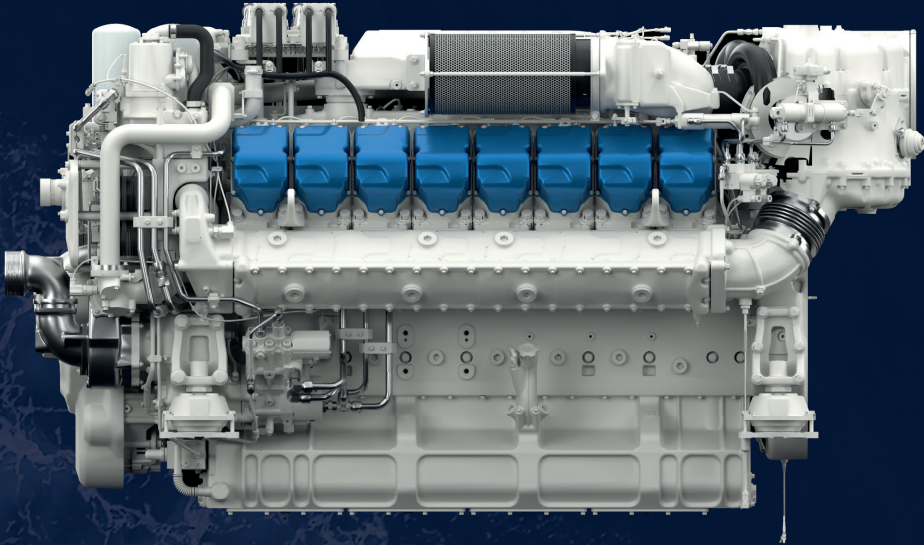
The Baudouin 16F23 is a robust 16-cylinder V-type diesel engine, designed to deliver exceptional performance for super yachts. This 4-cycle powerhouse features advanced common rail technology, turbocharging, and an air cooler for optimal efficiency and power output.

## KEY SPECIFICATIONS:

- **Cylinders:** 16 V-Type
- **Bore & Stroke:** 135/160 mm
- **Displacement:** 36.6 L
- **Compression ratio:** 15.5:1
- **Idle speed:** 700 rpm
- **Flywheel size:** SAE0/18

## WHY CHOOSE THE BAUDOUIN 16F23 FOR YOUR YACHT:

- **Power Dense Engine:** With up to 2000 kW / 2700 PS, the 16F23 provides ample power for even the most demanding yacht applications, ensuring swift and smooth cruising.
- **Efficiency:** The common rail technology and turbocharging system optimize fuel consumption, reducing operating costs and extending your range at sea.
- **Reliability:** Baudouin's reputation for building robust, long-lasting engines means you can trust the 16F23 to perform consistently, even in challenging marine conditions.
- **Compact Design:** Despite its impressive power output, the 16F23's V-configuration allows for a more compact engine room, maximizing onboard space for luxury amenities.
- **Environmental Compliance:** Meeting IMO II emission standards, the 16F23 ensures your yacht operates in an environmentally responsible manner without sacrificing performance.
- **Versatile Engine:** With multiple power ratings available, the 16F23 can be tailored to suit various yacht sizes and performance requirements.
- **Low Vibration:** The V16 configuration provides smooth operation, reducing noise and vibration for a more comfortable onboard experience.



## PERFORMANCE MODELS:

Models	Power(kW/Ps)	Speed	Emission	Power rating
16F23Y2640-25E200	1940/2640	2450	IMO II	P4
16F23Y2720-25E200	2000/2700	2450	IMO II	P5



# BAUDOUIN GENSET

## THE MOST SILENT GENSET AVAILABLE ON THE MARKET

Introducing Baudouin's 4M05 silent Yacht Marine Generator, a power solution designed specifically for high-end yachts. This silent genset combines advanced technology with a sleek design to deliver exceptional performance and comfort on the water.

### KEY FEATURES

- **Low Noise:** Advanced CFD flow field simulation and closed quiet chamber design effectively block engine noise.
- **Marine-Optimized:** Specially developed for harsh marine environments, featuring multiple injection and suspension vibration isolation technologies.
- **High Performance:** Fast and stable speed regulation with a reliable cooling system.
- **Global Quality:** Developed in cooperation with world-class suppliers for superior performance and reliability.
- **Compact Design:** Space-efficient structure optimized for yacht installations. Unmatched Performance.
- **Advanced Noise Reduction:** Innovative anti-noise technology ensures a serene onboard experience.
- **Harsh Environment Ready:** Engineered to withstand challenging marine conditions, featuring multiple injection and suspension vibration isolation technologies.
- **Stable Operation:** Delivers consistent power output with minimal fluctuations.
- **Competitive Edge:** Outperforms competitors in compact design.

### TECHNICAL SPECIFICATIONS

- **Engine:** In-line 4-cylinder turbocharged diesel engine featuring a common rail fuel injection system and an integrated air cooler
- **Displacement:** 2.49 L
- **Bore x Stroke:** 90 x 98 mm
- **Rated Power/Speed:** 35 kW at 1500 rpm



 <70 dBa

### PERFORMANCE MODELS:

Model	Length	Width	Height	Weight	Rating	Advantage
4M05 Genset	1370	660	770	605kg	35kW @1500rpm	<ul style="list-style-type: none"><li>• Max. overhaul period is up to 12000h</li><li>• The engine noise is as low as 70 dBa</li><li>• More compact in size and better fuel consumption</li><li>• Quiet</li><li>• Compact</li><li>• Reliable</li></ul>





## SERVICE NETWORK: YOUR TRUSTED PARTNER ON THE SEA

### WHY BAUDOUIN EXCELS IN SERVICE:

- Global network of **300+ trained technicians** in over **100 locations**
- Multilingual customer support available in **12 languages** ensuring seamless communication and assistance worldwide
- Factory-trained experts for commissioning, maintenance, repair, and overhaul
- Customized solutions for complex marine applications
- Dedicated department for specialized marine service and installations
- Data-driven approach for continuous improvement and customer satisfaction

## SERVICES AND MAINTENANCE: TECHNICAL SUPPORT AND DIAGNOSTICS

- Preventative maintenance programs
- Servicing, repairs, and general overhauls
- Requalification of components
- Product training for customers and partners
- Customized solutions for specific marine applications
- Theoretical and practical training at Baudouin Training Academy in Cassis, France



## SPARE PARTS AVAILABLE EVERYWHERE, ANYTIME

- **30,000+** parts in stock for immediate availability
- Rapid response and genuine spare parts minimize downtime
- **24/7** comprehensive online spare parts ordering system
- Genuine parts shipped worldwide within **24 hours**





Société Internationale des Moteurs Baudouin,  
Technoparc du Brégadan,  
13260 Cassis, France.

**Baudouin.com**

Some of the engines depicted may showcase alternative configurations or optional features available at additional cost. Specifications and characteristics are based on availability and may differ. Baudouin is not liable for any printing errors, technical modifications, or discrepancies. Due to printing limitations, actual colours may vary slightly from those shown.

Effective July 1, 2024. © Baudouin 2024